



**Performance & Quality Driven  
Reverse Circulation Hammers & Bits**

# Mincon MX 4044

## Why Buy the Mincon MX4044?

The Mincon Xploration (MX) 4044 is a high performance geological sampling tool that provides trouble free operation in all kinds of demanding conditions. It delivers superior penetration rates versus other manufacturers with extremely smooth drilling and continuous sampling.

Like all Mincon DTH hammers, the MX maintains excellent operating pressure over an extended service life and overall is the tool you require to get the maximum out of all your equipment.

Mincon Products are all manufactured in house, and all processes are controlled by Mincon's experienced Engineering Department. This guarantees that the quality you "Expect" is always delivered.

## Design Highlights:

- ▶ Patented Design provides excellent sampling in the most difficult conditions including unconsolidated ground, hard abrasive ground and large volumes of water.
- ▶ Provides the most cost effective high quality reverse circulation sampling available in the industry.
- ▶ Hammer delivers superior performance regardless of whether a high pressure booster is employed or not.
- ▶ Large parallel bore on sample tube provides excellent life in the toughest abrasive conditions.
- ▶ Patented internal mount system gives positive make-up and eliminates the need for wear shims and special assembly tools. Locking mechanism secures the top end of the hammer rigidly in place providing very smooth drilling
- ▶ All critical internal components are heat treated under strict control to maximize tool longevity.
- ▶ An overall cost-effective and user friendly tool for use in the most demanding conditions.



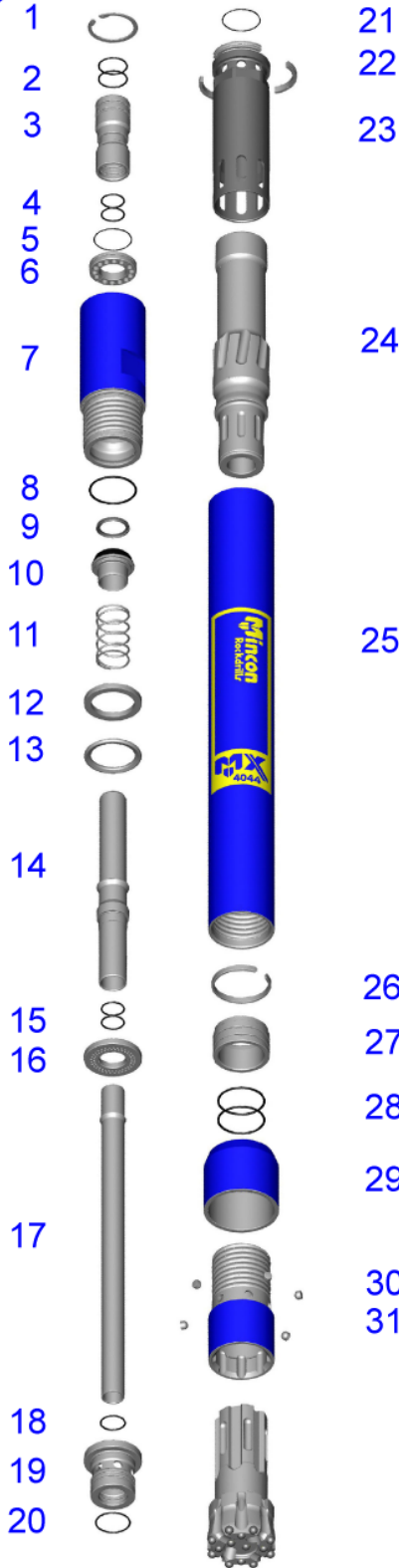
Applications:

- Geological Sampling

***'The Driller's Choice'***

***"LEADERS IN THE FIELD OF DRILLING TECHNOLOGY"***

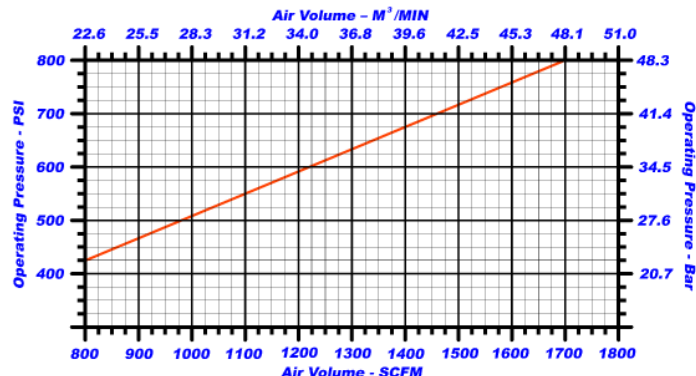
# MINCON MX4044 PARTS LIST & SPECIFICATION



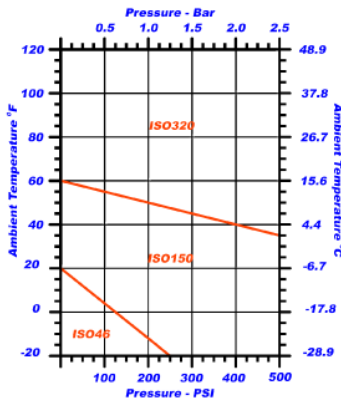
| Item | Description                       | Part No.    |
|------|-----------------------------------|-------------|
|      | Mincon MX4044 Hammer              | MX4044AA01  |
| 1    | Internal Circlip                  | D1300-0700  |
| 2    | O Ring                            | BS 132      |
| 3    | Adaptor Tube (3 1/2" Remet)       | MX4044AT01  |
| 4    | O Ring                            | BS 126      |
| 5    | O Ring                            | BS 036      |
| 6    | Air Screen                        | MX4044SC01  |
| 7    | Backhead (3 1/2" Remet)           | MX4044BH01  |
| 8    | O Ring                            | BS 233      |
| 9    | Check Valve Seal (Nitrile U Seal) | 8405-137    |
| 10   | Check Valve                       | MX4044CV01  |
| 11   | Check Valve Spring                | MX4044SP01  |
| 12   | Steel Make Up Ring                | MX4044SM01  |
| 13   | Lock Ring                         | MX4044LR01  |
| 14   | Top Tube                          | MX4044TT01  |
| 15   | O Ring                            | BS 126      |
| 16   | Spacer                            | MX4044SS01  |
| 17   | Sample Tube                       | MX4044ST01  |
| 18   | O Ring                            | MX4044DR01  |
| 19   | Sample Tube Mount                 | BS 128      |
| 20   | O Ring                            | BS 138      |
| 21   | O Ring                            | BS 036      |
| 22   | Seating Ring                      | MX4044SR01  |
| 23   | Inner Cylinder                    | MX4044IC01  |
| 24   | Piston                            | MX4044PN01  |
| 25   | Wear Sleeve                       | MX4044WS01  |
| 26   | Piston Retaining Ring             | MX4044PR01  |
| 27   | Alinger                           | MX4044BB01  |
| 28   | O Ring                            | BS 232      |
| 29   | Chuck Ring 100mm Dia.             | MX4044CS100 |
| 30   | Bit Retaining Pin                 | MX4044BR01  |
| 31   | Chuck                             | MX4044CK01  |

|                            |              |               |
|----------------------------|--------------|---------------|
| Hammer Outside Diameter    | 3.625"       | 92mm          |
| Bit Size                   | 4.0" - 4.5"  | 102mm - 114mm |
| Backhead Spanner Flat Size | 3"           | 76mm          |
| Hammer Length (Less Bit)   | 41.5"        | 1055mm        |
| Bit Shank Type             | MX4044       |               |
| Backhead Thread            | 3 1/2" Remet |               |
| Weight (Less Bit)          | 101 Lbs      | 46 Kgs        |
| Stand Off                  | 0.036"       | 0.9mm         |

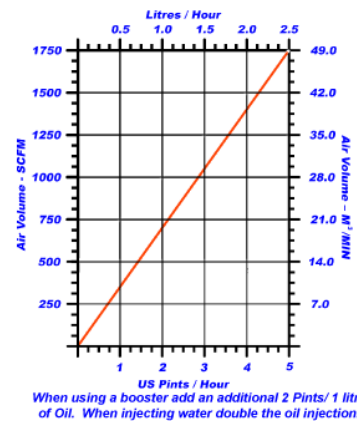
## OPERATING PRESSURE / AIR CONSUMPTION



## ROCKDRILL OIL GRADE



## ROCKDRILL OIL CONSUMPTION



Mincon Rockdrills Pty Ltd.

243 Collier Road, Bayswater

WA 6053, Australia

Telephone: +61 8 9471 2700

Fax: +61 8 9471 2790

Email: jelsby@mincon.com.au

Web: <http://www.mincon.com>

**Distributed by:**