

MC80

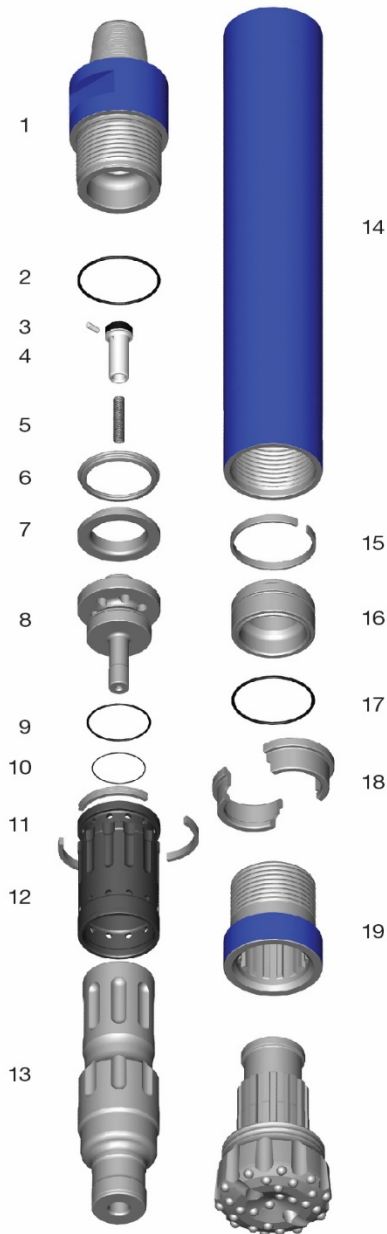


Parts and Specifications

Copyright © Mincon 2020, All Rights Reserved.



Mincon MC80 Parts and Specifications



Item #	Part Number	Description
	MD801AS08	Mincon MC80 (4 1/2" A.P.I. Reg. Pin)
1	MD801BH01	Backhead (4 1/2" A.P.I. Reg. Pin)
2	MD822OR01	O Ring
3	MB506CH01	Choke Blank
4	MD802CV01	Check Valve
5	MB503SP01	Spring
6	MD804SM01	Steel Make-Up Ring
7	MD805LR01	Lock Ring
8	MD807DR01	Air Distributor
9	MD821OR01	O Ring
10	MD820OR01	O Ring
11	MD809SR01	Seating Ring
12	MD808IC01	Inner Cylinder
13	MD810PN04	Piston
14	MD811WS01	Wear Sleeve
15	MD812PR01	Piston Retaining Ring
16	MD813BB02	Aligner
17	MD822OR01	O Ring
18	MD814BR05	Bit Retaining Ring
19	MD815CK05	Chuck (MC81)
20	MD826SK04	Service Kit
	MD826SK04	Service Kit
3	MB506CH01	Choke Blank
	MB506CH02	Choke 1/8" (3.2mm)
	MB506CH03	Choke 3/16" (4.8mm)
5	MB503SP01	Spring
	MD825OK04	O Ring Kit
	MD825OK04	O Ring Kit
2	MD822OR01	O Ring
9	MD821OR01	O Ring
10	MD820OR01	O Ring
17	MD822OR01	O Ring

Specifications

Hammer Outside Diameter	181mm (7.15")
Hammer Length (Less Bit, Backhead Shoulder to Chuck)	1,171mm (46.1")
Backhead Spanner Flat Size	140mm (5.5")
Drill bit Shank Type	MC81
Minimum Bit Size	203mm (8")
Hammer Weight (Less Bit)	180.1 kg (392 lbs)
Drill Bit Weight (4.5"/114mm)	53kg (117 lbs)
Piston Weight	46.3kg (102 lbs)
Backhead Stand Off	0.75mm (0.03")
Make-up Torque	8,135-10,850Nm (6,000-8,000 lbf.ft)
Wear Sleeve Reverse Limit	172mm (6.8")
Wear Sleeve Discard Limit	169mm (6.7")
Recommended Minimum Air Package	425 L/s @ 24 bar (900 cfm @ 350 psi)