

# MP65

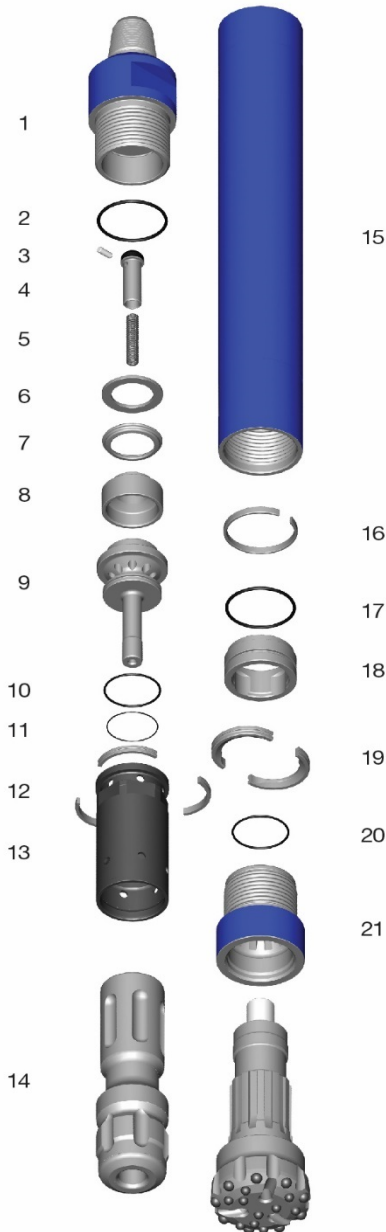


## Parts and Specifications

Copyright © Mincon 2020, All Rights Reserved.



## Mincon MP65 Parts and Specifications



Item	Part Number	Description
	<b>MC601AS05</b>	<b>Mincon MP65 – 3 1/2" API Reg. Pin</b>
1	MC601BH01	Backhead (3 1/2" API Reg. Pin)
2	MD622OR01	O Ring
3	MB506CH01	Choke Blank
4	MB502CV01	Check Valve
5	MB503SP01	Spring
6	MB504SM01	Steel Make Up Ring
7	MB505LR01	Lock Ring
8	MC603LM01	Lock Ring Mount
9	MD607DR01	Air Distributor
10	MD621OR01	O Ring
11	MD620OR01	O Ring
12	MC609SR01	Seating Ring
13	MC608IC01	Inner Cylinder
14	MP610PN02	Piston
15	MC611WS01	Wear Sleeve
16	MC612PR01	Piston Retaining Ring
17	MD622OR01	O Ring
18	MP613BB01	Aligner
19	MP614BR02	Bit Retaining Ring
20	MD621OR01	O Ring
21	MC615CK01	Chuck (QL60)
	<b>MD626SK05</b>	<b>Service Kit</b>
3	MB506CH01	Choke blank
-	MB506CH02	Choke 1/8" (3.2mm)
-	MB506CH03	Choke 3/16" (4.8mm)
	<b>MD625OK05</b>	<b>O-ring Kit</b>
2	MD622OR01	O-ring
10	MD621OR01	O-ring
11	MD620OR01	O-ring
17	MD622OR01	O-ring
20	MD621OR01	O-ring

### Specification

Hammer Outside Diameter	146mm (5.75")
Hammer Length (Less Bit, Backhead Shoulder to Chuck)	1,002mm (39.4")
Backhead Spanner Flat Size	100mm (4")
Drill Bit Shank Type	QL60
Minimum Bit Size	165mm (6.5")
Hammer Weight (Less Bit)	93kg (205 lbs)
Drill Bit Weight (6 1/2"/165mm)	24.5kg (54 lbs)
Piston Weight	21.6kg (47.6 lbs)
Backhead Stand Off	0.75mm (0.03")
Wear Sleeve Reverse Limit	Non Reversible
Wear Sleeve Discard Limit	130.7mm (5.15")
Recommended Minimum Air Package	283 l/s @ 20.7 bar (600 cfm @ 300 psi)